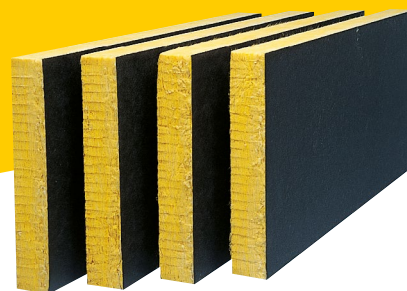


MUPAN FAÇADE

Thermal insulation for facade systems



PRODUCT DESCRIPTION

Extremely durable glass wool facade panel, with black glass veil at the front and yellow glass veil at the back.

APPLICATION

Isover Mupan Façade is suitable for thermal insulation of facades. The height of the building imposes restrictions on the application of Isover Mupan Façade: 200 metres is the maximum height. Isover Mupan Façade is suitable for both closed and open joint systems. Isover Mupan Façade is not suitable for use behind transparent or semi-transparent glass, behind expanded metal screens or other 'semi-open' or perforated facade panels without a sturdy, vapour-permeable, waterproof finish.

PRODUCT BENEFITS

- Invisible behind open joints.
- Non-combustible.
- Easy processing and installation.
- Customisation per project on request.

TECHNICAL DATA

Thermal properties: $R_{declared}$

Thickness in mm	130	140	160	180	200
$R_{declared}$ in m ² .K/W	4,05	4,35	5,00	5,60	6,25

Please note: in practice, thermal bridges must usually be taken into account, depending on the fastening construction of the panels, and up to approx. 30 mm thicker insulation must be used.

For more calculations, see Isover's Termical calculation programme at www.termical.nl.

Fire safety

Non-combustible. Fire class A1 in accordance with EN 13501-1.

Moisture behaviour

- Water-repellent.
- Non-capillary.
- Non-hygroscopic.
- Water vapour diffusion resistance value: $\mu = 1.0$.

OTHER PROPERTIES

- Rot-proof.
- Retains its shape.
- Not a breeding ground for organisms.

CERTIFICERING

- KOMO product certificate K24668.
- CE marking.
- Quality system: certified in accordance with ISO 9001.
- Environmental management system: certified according to ISO 14001.

AFMETINGEN

Thickness in mm	Width in mm*	Length in mm*	m ² per pack	m ² per pallet
130	600	1500	3,60	43,20
140	600	1500	3,60	43,20
160	600	1500	3,60	43,20
180	600	1500	2,70	32,40
200	600	1500	2,70	32,40

* Other dimensions on request.

DELIVERY FORM

Isover Mupan Façade is delivered in packs on pallets. The pallets are wrapped in weather-resistant foil and can be stored outside on the construction site.

MUPAN FAÇADE

PROCESSING

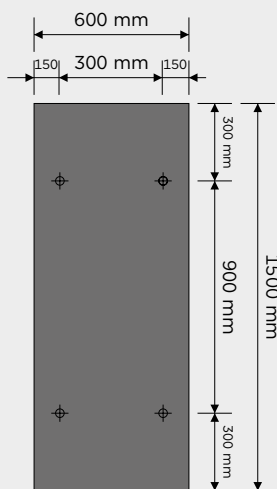
Isover Mupan Façade should be tightly fastened to the underlying structure in order to prevent air flows and rain penetration. When installing Isover Mupan Façade in a facade where the joints of the facade cladding remain open, the vertical seams between the panels and the open joints should preferably be offset by at least 100 mm.

The insulation requirements and the height of the building determine the choice for the facade insulation to be used. Isover Mupan Façade can be used up to a building height of 200 metres.

Please note: some curtain walls are executed as a “double facade”. These facades are characterised by large distances between the insulation and the outside facade (from 10 cm) as well as large openings in the exterior facade surface and/or at the bottom and top of the facade. In effect, this is a facade in front of a facade, where the facade behind it is also exposed to the elements. In this case, it is advisable to cover the Isover facade products with a sturdy, vapour-permeable and water-repellent foil. This foil must be firmly anchored according to the foil supplier’s instructions.

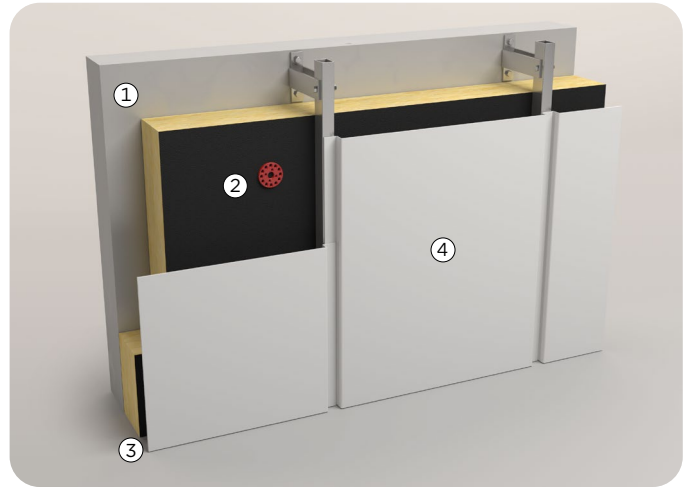
FASTENING

Example of fastening for dimensions of 1500 x 600 mm



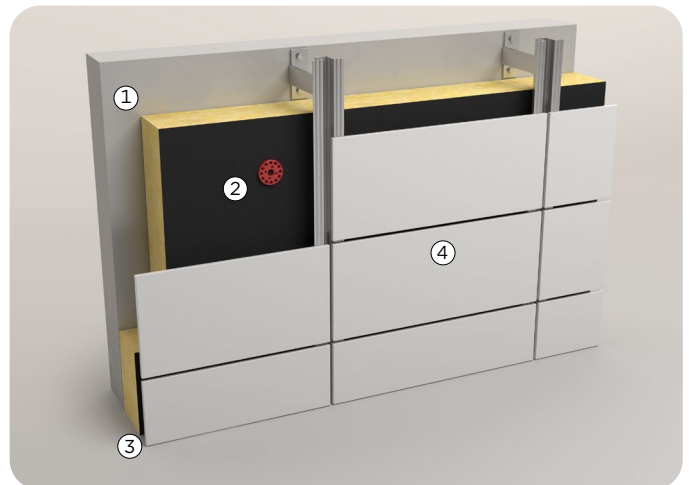
Isover Mupan Façade must be mechanically fastened to the surface. The number of fastenings also depends on the height of the building and the type of construction. The anchors should be positioned at a maximum distance of 150 mm from the longitudinal side and 300 mm from the face of the panel. Apply the facade cladding as soon as possible after fastening the Isover Mupan Façade.

ISOVER MUPAN FAÇADE APPLICATION



Closed curtain wall

	R (m ² .K/W)
1. Cast-in reinforced concrete	≥ 0.08
2. Insulation, Isover Mupan Façade	
3. Unventilated cavity	0.18
4. Facade cladding	-



Curtain wall with open joints

	R (m ² .K/W)
1. Cast-in reinforced concrete	≥ 0.08
2. Insulation, Isover Mupan Façade	
3. Ventilated cavity	-
4. Facade cladding	-

SPECIFICATIONS

STABU specifications are available for various constructions. The Isover specifications service can be found at www.isover.nl/bestekservice.

ENVIRONMENT

- Recycled glass is used as a raw material.
- During its lifespan, Isover mineral wool saves more than 100 times the energy needed to produce, transport, remove and dispose of it, further reducing harmful greenhouse gas emissions such as CO₂.
- Isover operates efficient recycling facilities, allowing glass wool to be recycled infinitely into new insulation material.
- Isover is constantly working to reduce its emissions, sort and recycle waste and reduce its water and energy consumption.

HEALTH

- Isover mineral wool complies with European Directive 97/67/EC showing that mineral wool is safe in production and use (EUCEB certified).
- The improved binder minimises emissions of VOCs (volatile organic compounds), meeting the most stringent international requirements.
- The total Isover glass wool range features the Eurofins Indoor Air Comfort Gold label, the best quality class for healthy indoor air.



Isover Nederland
Postbus 96 • 4130 EB Vianen
Tel.: 0347 35 84 00
E-mail algemeen: info@isover.nl
E-mail verkoop: verkoop@isover.nl
www.isover.nl