

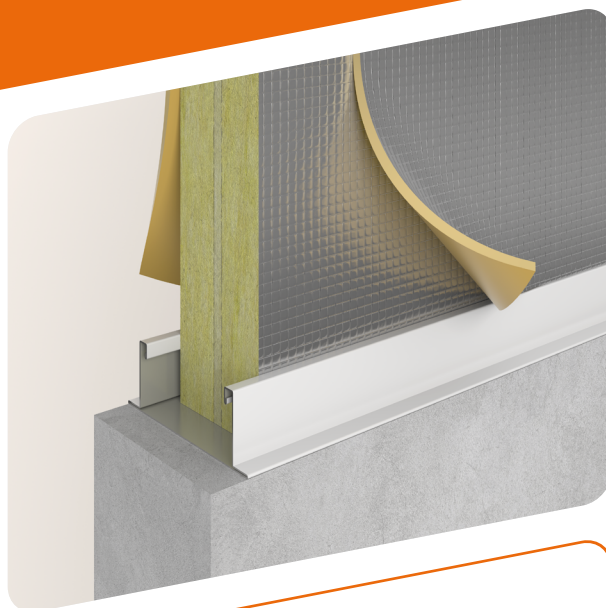


## SONOREX® 47

### Noise barriers

#### MOST IMPORTANT ADVANTAGES

- Sound insulation  $R_w$  is 47 dB
- Eurofins Air Comfort Gold label
- Customisable: less waste on the construction site



#### THE SYSTEM

SONOREX® 47 is a sound-insulating barrier consisting of two Isover stone wool panels (compressed), covered with reinforced aluminium foil. The noise barrier has an additional sound-insulating core of the innovative ULTIMATE™ lightweight stone wool. To achieve the extra high sound insulation, the SONOREX® 47 noise barrier has a double-sided finish with 5 mm SONOREX® Easy Mass foil with a mass of 10 kg/m<sup>2</sup> (applied off-site or separately on the project).

#### APPLICATION

The SONOREX® 47 noise barrier has been specially developed for use on lightweight partition walls above suspended ceilings to improve the flanking sound insulation.

#### OVERVIEW PERFORMANCE & CONDITIONS

Sound insulation $R_w$ based on EN ISO 717	47 dB
Smoke permeability based on the Dutch standard NEN 6075	Sa & S200
Maximum height SONOREX® (smoke)	1200 mm
Weight SONOREX® 47	28.6 kg/m <sup>2</sup>

The SONOREX® products have been tested according to the standards stated in this product sheet. Contact us for questions about the application area, dimensions and connections.

#### SYSTEM SELECTOR

Our system selector helps you to easily find the right SONOREX® noise barrier for your project. Make your choice based on the requirements for fire and acoustic comfort in combination with a ceiling panel. Our SONOREX® noise barriers have been tested in combination with the most commonly used ceiling systems.



Visit [saint-gobain-solutions.nl/sonorex-systeemselector](https://saint-gobain-solutions.nl/sonorex-systeemselector) or scan the QR code.

# SONOREX® 47

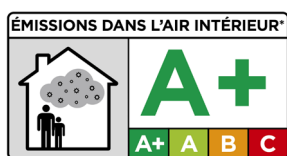
## DIMENSIONS\*

Standard height SONOREX®	600 mm
Maximum height SONOREX®	2000 mm
Standard length SONOREX®	1200 mm
Thickness SONOREX® 47	66 mm
Thickness SONOREX® Easy Mass foil	5 mm (double-sided)

\* SONOREX® is available in customized dimensions. Please contact us for more information.

## CERTIFICATION

- Eurofins Indoor Air Comfort Gold label, the best quality class for healthy indoor air.
- A+ (VOC).



## FIRE SAFETY

### Smoke permeability

SONOREX® 47 noise barriers are tested according to the Dutch standard NEN 6075. The smoke permeability of the components is expressed in Sa or S200. The Sa and S200 tests are always performed at a number of pressure differences. S200 delivers a higher performance than Sa.

- Sa: the component has been tested with cold smoke at a room temperature of  $\pm 20^{\circ}\text{C}$ .
- S200: the component has been tested with cold smoke at room temperature and at  $200^{\circ}\text{C}$ .

If there is a need to meet the smoke permeability requirements, then SONOREX® tape must be applied on one side.

## ACOUSTIC COMFORT

### Sound insulation

The SONOREX® 47 noise barrier has a (direct) sound insulation ( $R_w$ ) of 47 dB (laboratory value). This single-digit value  $R_w$  is determined in accordance with EN ISO 717. The underlying Peutz report is available for inspection. Ask our Customer Service about this.

### Flanking sound insulation

Sound transmission from one room to another can easily occur via the space above a suspended ceiling (the so-called plenum). This is called flanking sound insulation. SONOREX® noise barriers significantly reduce this sound transmission. In our SONOREX® selector you can easily find the calculated flanking sound insulation  $D_{n,f,w}$  value in combination with the desired ceiling panel. Visit [saint-gobain-solutions.nl/sonorex-systeemselector](http://saint-gobain-solutions.nl/sonorex-systeemselector) or scan the QR code.



Product changes or inaccuracies are reserved. The most up to date information can be found at [saint-gobain-solutions.nl/sonorex](http://saint-gobain-solutions.nl/sonorex).

## INSTALLATION



For application of the SONOREX® 47 noise barriers, we refer you to the SONOREX® installation instructions. You can download this at [saint-gobain-solutions.nl/sonorex-47](http://saint-gobain-solutions.nl/sonorex-47) or simply scan the QR code. If you have specific questions about the installation of SONOREX® 47, please contact us.

## BIM SERVICE

You can quickly and easily find BIM information in our specification service. Visit [saint-gobain-solutions.nl/tools](http://saint-gobain-solutions.nl/tools).

## CONTACT

Would you like personal advice about our SONOREX® noise barriers? Please contact our specialists at Customer Service.

☎ +31 (0)13 578 48 87

✉ [sales.is@saint-gobain-solutions.nl](mailto:sales.is@saint-gobain-solutions.nl)

SAINT-GOBAIN

Saint-Gobain Solutions

Office Tilburg

Minosstraat 40, 5048 CK Tilburg, The Netherlands

Tel: +31 (0)13 578 48 87

Email: [sales.is@saint-gobain-solutions.nl](mailto:sales.is@saint-gobain-solutions.nl)

[saint-gobain-solutions.nl](http://saint-gobain-solutions.nl)